
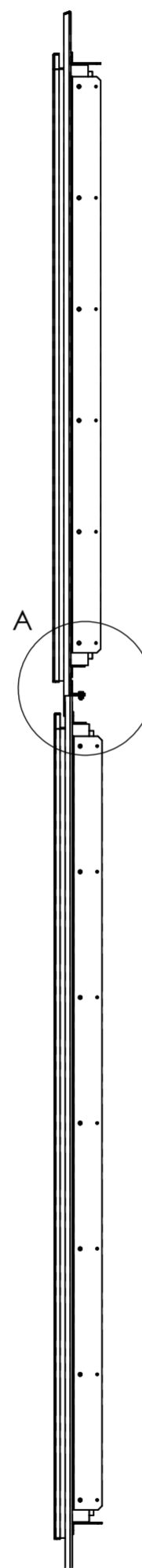
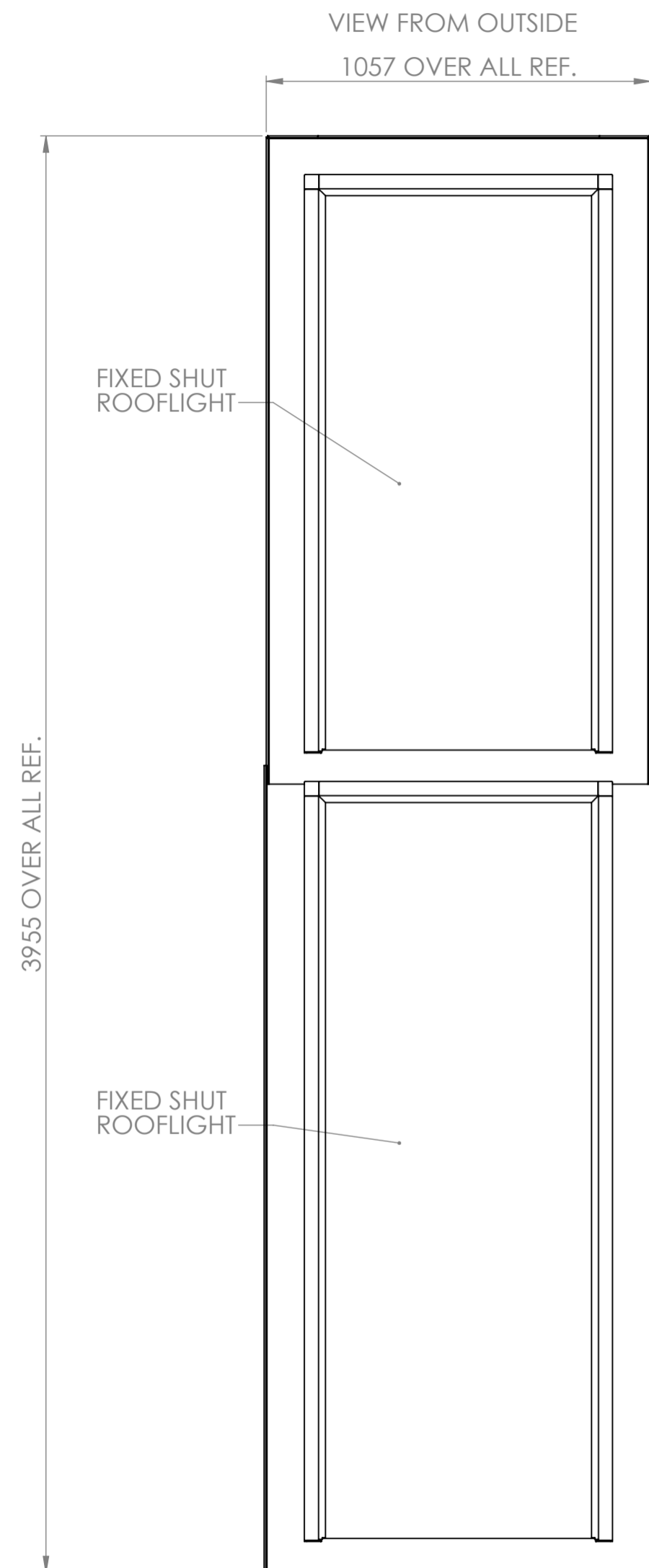


GENERAL INFORMATION
 3RD ANGLE PROJECTION 
 DO NOT SCALE - IF IN DOUBT, ASK
 REMOVE ALL SHARP EDGES AND BURRS

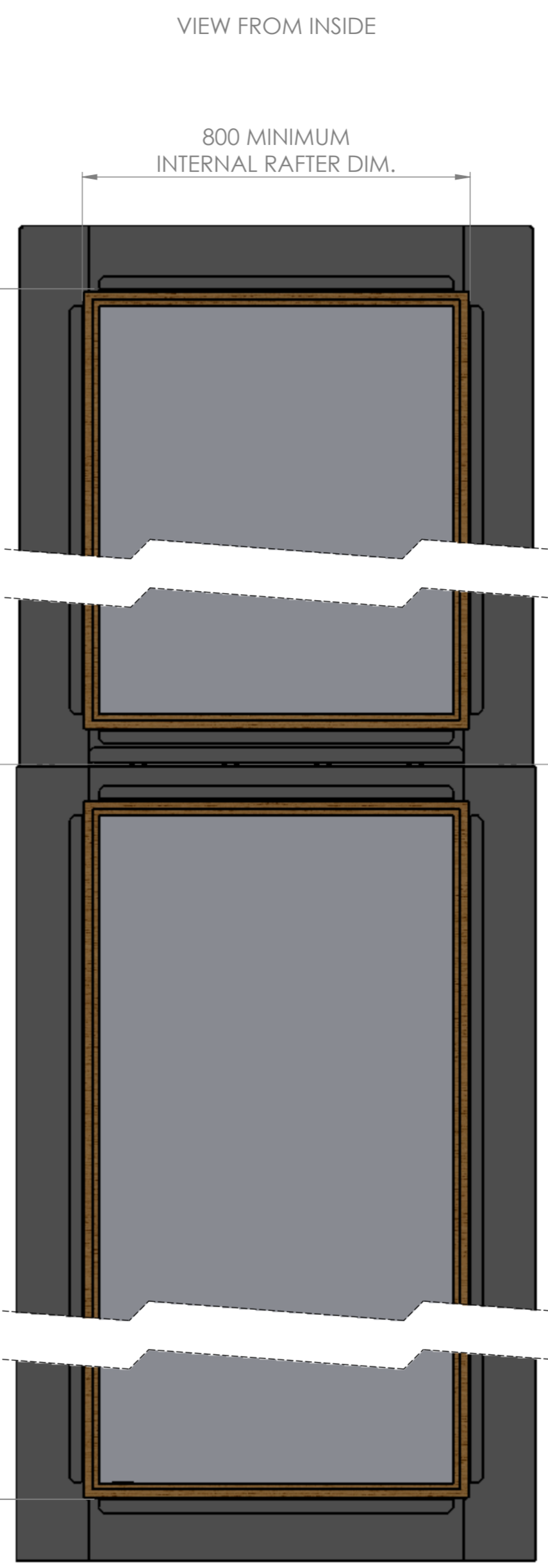
ITEM NO.	PART NUMBER	DESCRIPTION	QTY.
1	LUM1169A	BESPOKE FIXED SHUT ROOF LIGHT GA	
2	LUM1159A	BESPOKE FIXED SHUT ROOF LIGHT GA	
3	LUM1171P	WOODEN INFILL	

TOLERANCES UNLESS OTHERWISE SPECIFIED

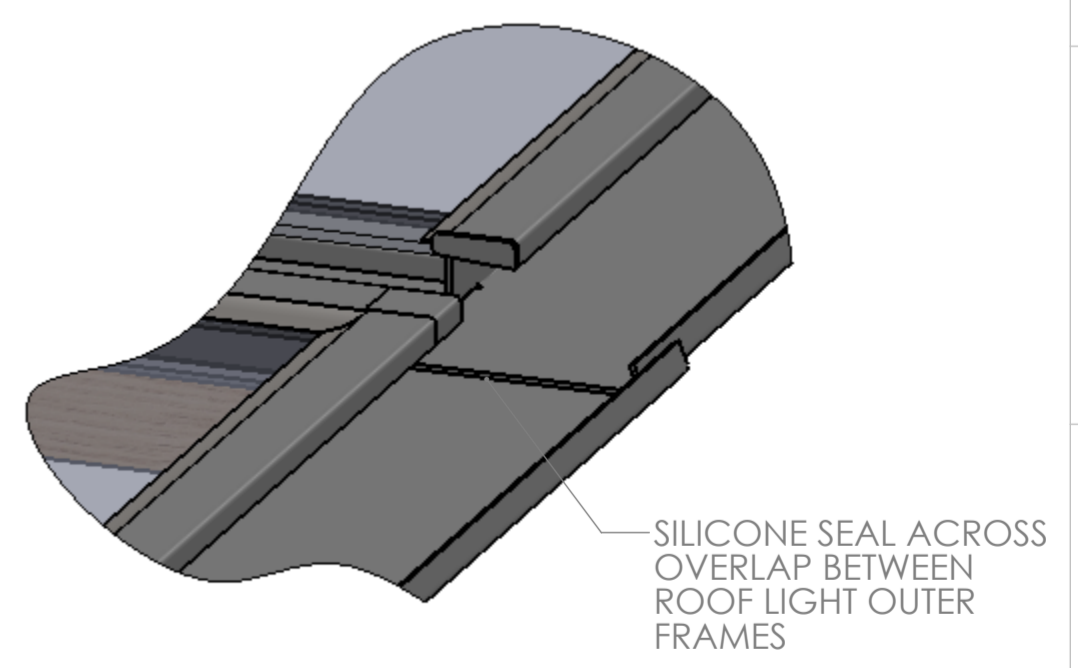
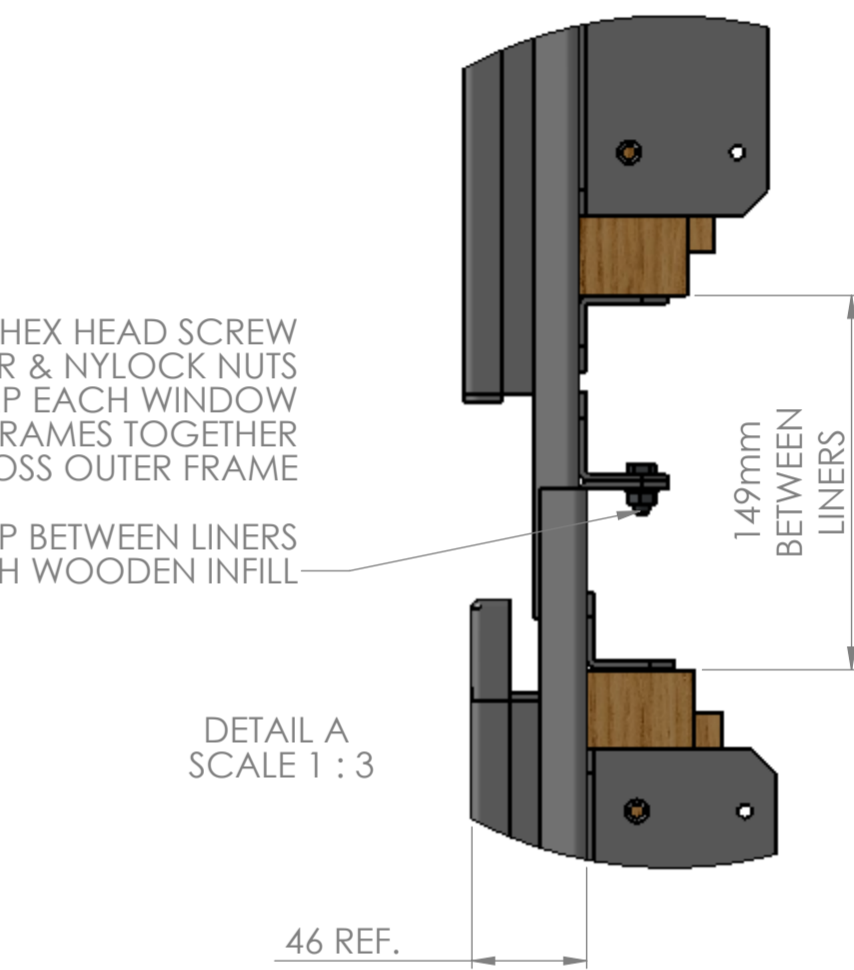
LINEAR - 0 DECIMAL PLACES	±1.0mm
LINEAR - 1 DECIMAL PLACES	±0.50mm
LINEAR - 2 DECIMAL PLACES	±0.15mm
ANGULAR	±1.0°
SURFACE FINISH - GENERAL	3.2 µm
SURFACE FINISH - MACHINED	1.6 µm
SURFACE FINISH - GROUND	0.4 µm
SURFACE FINISH - POLISHED	0.2 µm
SCREW THREAD - INTERNAL	6H
SCREW THREAD - EXTERNAL	6g



3700 MINIMUM
INTERNAL RAFTER DIM.



5 OFF M6x20 HEX HEAD SCREW
 WASHER & NYLOCK NUTS
 TO CLAMP EACH WINDOW
 FRAMES TOGETHER
 ACCROSS OUTER FRAME
 BRIDGE GAP BETWEEN LINERS
 WITH WOODEN INFILL



LUMEN
 ROOFLIGHT

THE INFORMATION CONTAINED IN THIS DRAWING IS THE
 SOLE PROPERTY OF LUMEN.
 ANY REPRODUCTION IN PART OR AS A WHOLE WITHOUT
 WRITTEN PERMISSION IS STRICTLY PROHIBITED
 SHEET: 1 OF 1 - A2
 DATE: 19/01/14

DRAWN: S.C
 SCALE: 1:15
 WEIGHT: 185
 UNITS: mm; kg

TITLE: BESPOKE ROOF LIGHT INSTALLATION GA
 REF: 78-11566
 SA. REF:

MATERIAL: MILD STEEL
 TREATMENT:
 FINISH: SHOT BLAST TO SA2.5 & POWDER COAT PZ790
 SYSTEM RAL. 9005 BLACK

PART TYPE: BESPOKE
 PART REF: LUM1170A
 DRG. No. LUM1170A
 ISSUE: 2